

Level 4 Concepts

Answer questions about a fiction book about transportation read independently.

Answer questions about a fiction book about animals read independently.

Answer questions about a nonfiction book about animals read independently.

Answer questions about a nonfiction book about the human body read independently.

Answer questions about a nonfiction book about transportation read independently.

Answer questions about characters.

Answer questions about the events in a fiction book.

Ask and answer questions about a nonfiction book.

Ask and answer questions about a nonfiction book about careers.

Ask and answer questions about a nonfiction book about transportation.

Ask and answer questions about an informational fiction book about plants.

Ask and answer questions about an informational fiction book about the human body.

Ask and answer questions about an informational fiction book about weather.

Ask questions about a fiction book.

Ask questions about a nonfiction book about plants.

Ask questions about a nonfiction book about the human body.

Build CVC words (l, j, k, e).

Change a sound in a spoken word to make a new word.

Differentiate key details from less important details in a nonfiction text.

Distinguish whether spoken words have the same beginning sound.

Generate questions about a nonfiction book about transportation.

Identify and understand domain-specific, academic words to comprehend a text.

Identify and understand the topic of a text.

Identify CVC words (v, w, x).

Identify details in a nonfiction book.

Identify details in a nonfiction book about plants.

Identify details in a nonfiction book about weather.

Identify facts from a nonfiction book read independently.

Identify facts in a nonfiction book.

Identify facts in a nonfiction book about animals read independently.

Identify facts in a nonfiction book about plants read independently.

Identify facts in a nonfiction book about transportation read independently.

Identify facts in a nonfiction book about weather read independently.

Identify facts in an informational fiction book about transportation.

Identify missing letters in CCVC words with initial blends (br, cr, dr, fr, gr, pr, tr).

Identify missing letters in CCVC words with initial blends (cl, fl, gl, pl, sl).

Identify missing letters in CCVC words with initial blends (sk, sm, sn, sp, st, sw).

Identify missing letters in CVC words (f, p, g, o).

Identify missing letters in CVC words (h, r, d, u).

Identify missing letters in CVC words (l, j, k, e).

Identify missing letters in CVC words (m, t, s, a, b, c, n, i).

Identify missing letters in CVC words (v, w, x).

Identify missing letters in CVC words (y, z, q).

Identify missing letters in CVCC words with final blends (lk, lp, mp, nd, nt, sk, st).

Identify missing letters in words (ch, sh, th).

Identify setting.

Identify sounds in a three-sound spoken word.

Identify the characters in a story.

Identify the first sound in a spoken word.

Identify the first, middle, or last sound in a spoken word.

Identify the last sound in a spoken word.

Identify the middle sound in a spoken word.

Identify the topic of a nonfiction book.

Identify the topic of a nonfiction book about plants.

Identify the topic of a nonfiction book about the human body.

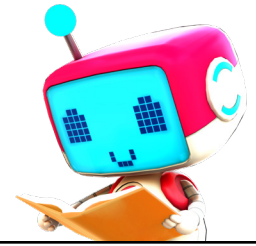
Identify the topic of a nonfiction book about transportation.

Identify the topic of a nonfiction book about weather.

Identify topic as what a nonfiction book is mostly about.

Infer by combining details as a reading strategy to comprehend a text.

Learn new information about science topics from nonfiction texts.



Level 4 Concepts (continued)

Make a prediction in a story with two characters.

Match consonant digraph sounds (ch, sh, th) to printed letters.

Match sounds to letters (final digraphs).

Read a CVC word with a beginning consonant digraph (ch, sh, th).

Read a CVC word with short vowels and a beginning consonant digraph (ch, sh, th).

Read a sentence with words containing letters (ch, sh, th) and sight words (was, for).

Read a sentence with words containing the letters (h, r, d, u, l, j, k, e) and sight words (on, to, and, the).

Read a sentence with words containing the letters (m, t, s, a, b, c, n, i, f, p, g, o) and sight words (a, l, at, it, in, is).

Read a sentence with words containing the letters (v, w, x, y, z, q) and sight words (he, be, we, are).

Read a sentence with words with final blends and sight words (this, they, with, from).

Read a sentence with words with initial blends and sight words (you, she, that, have).

Read aloud with fluency and expression (and, the) and words with letters (l, j, k, e).

Read aloud with fluency and expression with sight words (are, we, at) and words with letters (y, z, q).

Read aloud with fluency and expression with sight words (he, be) and words with letters (v, w, x).

Read aloud with fluency and expression with sight words (l, a, it) and words with letters (m, t, s, a, b, c, n, i).

Read aloud with fluency and expression with sight words (in, is) and words with letters (f, p, g, o).

Read aloud with fluency and expression with sight words (on, to) and words with letters (h, r, d, u).

Read aloud with fluency and expression with sight words (that, have) and L blends.

Read aloud with fluency and expression with sight words (this, they) and R blends.

Read aloud with fluency and expression with sight words (was, for) and digraphs (sh, ch, th).

Read aloud with fluency and expression with sight words (with, from) and final blends.

Read CCVC words.

Read CCVC words with initial blends (br, cr, dr, fr, gr, pr, tr).

Read CCVC words with initial blends (cl, fl, gl, pl, sl).

Read CCVC words with initial blends (sk, sm, sn, sp, st, sw).

Read CVC words (f, p, g, o).

Read CVC words (h, r, d, u, l, j, k, e).

Read CVC words (h, r, d, u).

Read CVC words (m, t, s, a, b, c, n, i, f, p, g, o).

Read CVC words (m, t, s, a, b, c, n, i).

Read CVC words (y, z, q).

Read CVCC words.

Read CVCC words with final blends (lk, lp, mp, nd, nt, sk, st).

Retell events in a book in order.

Retell events in a fiction book about animals read independently.

Retell events in a fiction book about the human body read independently.

Retell events in a fiction book about transportation read independently.

Retell events in a fiction book about weather read independently.

Retell events in a fiction book read independently.

Retell events in a fiction story.

Retell events in fiction book about plants read independently.

Trace uppercase and lowercase letters (Aa).

Trace uppercase and lowercase letters (Bb).

Trace uppercase and lowercase letters (Cc).

Trace uppercase and lowercase letters (Dd).

Trace uppercase and lowercase letters (Ee).

Trace uppercase and lowercase letters (Ff).

Trace uppercase and lowercase letters (Gg).

Trace uppercase and lowercase letters (Hh).

Trace uppercase and lowercase letters (Ii).

Trace uppercase and lowercase letters (Jj).

Trace uppercase and lowercase letters (Kk).

Trace uppercase and lowercase letters (Ll).

Trace uppercase and lowercase letters (Mm).

Trace uppercase and lowercase letters (Nn).

Trace uppercase and lowercase letters (Oo).

Trace uppercase and lowercase letters (Pp).

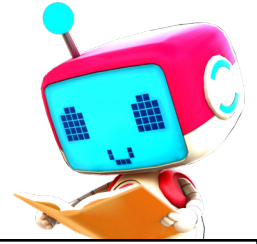
Trace uppercase and lowercase letters (Qq).

Trace uppercase and lowercase letters (Rr).

Trace uppercase and lowercase letters (Ss).

Trace uppercase and lowercase letters (Tt).

Trace uppercase and lowercase letters (Uu).



Level 4 Concepts (continued)

Trace uppercase and lowercase letters (Vv).

Trace uppercase and lowercase letters (Ww).

Trace uppercase and lowercase letters (Xx).

Trace uppercase and lowercase letters (Yy).

Trace uppercase and lowercase letters (Zz).

Understand that characters are the people or animals who act out the story.

Understand that fiction stories have a beginning, middle, and end.

Understand that setting is where a story takes place.

Understand that setting means where and when a story takes place.

Understand that some stories are about reaching a goal.

Understand that some stories are make-believe.

Understand where and when a story takes place.

Use common text features to locate important facts or information in a text.

Use text evidence to support answers to questions about a nonfiction text.